

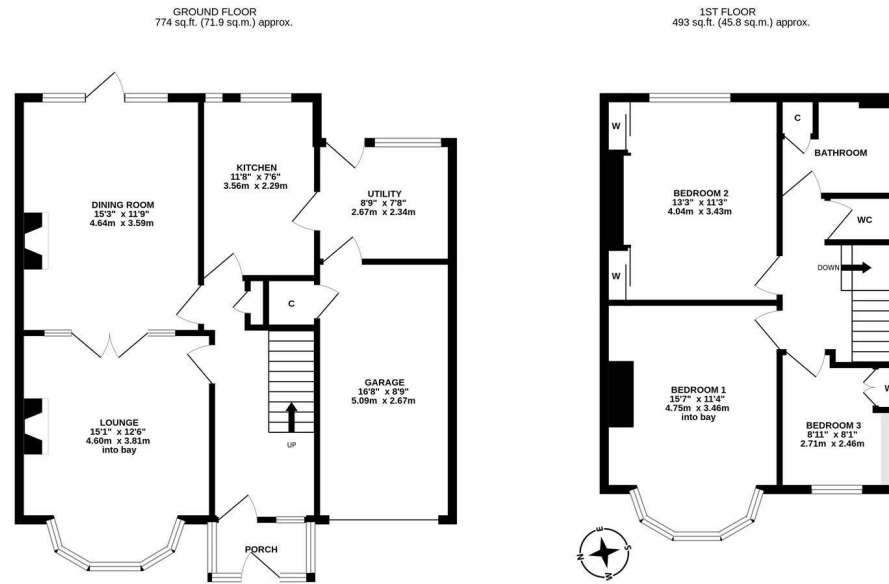


****AVAILABLE IMMEDIATELY****
****UNFURNISHED** **SEMI-DETACHED HOUSE WITH REAR GARDEN** **GARAGE**** A fantastic 1930's semi-detached house, well presented throughout with three bedrooms, two reception rooms, modern bathroom, private rear garden and an integral garage. This wonderful family home, found in a great location in a good school catchment area, close to Ilford Road Metro station and the Freeman hospital simply demands an early inspection!

The accommodation briefly comprises an entrance porch leading to hallway with recently fitted carpet; lounge to the front with bay window and feature fireplace; double doors through to second reception space, an ideal dining room with door to rear garden; modern fitted kitchen with integrated appliances including a dishwasher; separate utility with door leading to rear garden; 16ft integral garage. The first floor comprises bedroom one to the front with bay window; bedroom two to the rear with fitted wardrobes; bedroom three which could alternatively be utilised as a study if preferred; recently installed bathroom, fully tiled with spot-lighting, three piece suite and separate WC. Externally there is a garden to the rear, laid mainly to lawn also with mature shrubs and hedged/fenced boundaries. To the front, a small garden, with gated driveway providing off street parking. With gas central heating and double glazed windows, a superb family home available on an unfurnished basis.

Please Note: The property can only be let to either a single family household, or maximum of two individual sharers.

Available Immediately | £1,750pcm | Unfurnished | Semi Detached House | 1,267 Sq. ft (117.7 m2) | Lounge | Dining Room | Kitchen With Integrated Appliances | Utility | Family Bathroom | Separate WC | Three Bedrooms | Integral Garage | DG & GCH | Front & Rear Gardens | Driveway | Great Location | Council Tax Band: D | EPC Rating: D



Whilst every attempt has been made to ensure the accuracy of the floorplan contained here, measurements of doors, windows, rooms and any other items are approximate and no responsibility is taken for any error, omission or mis-statement. This plan is for illustrative purposes only and should be used as such by any prospective purchaser. The services, systems and appliances shown have not been tested and no guarantee as to their operability or efficiency can be given.
 Made with Meepox 12/2025

£1,750 PCM

IMPORTANT NOTE: These particulars and the descriptions and measurements herein do not constitute representation and whilst every effort has been made to ensure accuracy, this cannot be guaranteed.

